



**EVERYTHING YOU NEED
FOR A COMFORTABLE LIFE!**

OUR BEAUTIFUL GRADUATE COMMUNITY FEATURES
1 AND 2 BEDROOM APARTMENTS DESIGNED WITH A
SPACIOUS LIVING AREA AND A MODERN KITCHEN!



**FISHER
COMMONS.COM**

stop in for a tour!

**900 NETTLE DR.
COLS, OH 43221**

**FISHERCOMMONS
@ESHMC.COM**

**FISHER
COMMONS
.COM**

**FISHER
COMMONS**

now
LEASING
for fall!

**1 & 2 BEDROOM HOMES
IN OUR QUIET COMMUNITY**

QUIET
LUXURY
GRADUATE
STUDENT
HOUSING





Your space.

- COURTYARD VIEWS
- PICTURE WINDOWS WITH ABUNDANT NATURAL LIGHT
- ENERGY EFFICIENT HEATING AND COOLING
- BERBER CARPETING
- WHITE MINI BLINDS
- COAT CLOSET
- SPACIOUS WALK-IN CLOSETS
- FULL SIZE STACKABLE WASHER/DRYER INCLUDED
- 9' CEILINGS
- ISLAND KITCHENS
- BUILT-IN COMPUTER WORK STATIONS W/ MAIL CENTER *
- CUSTOM DESIGNER WHITE CABINETRY WITH BRUSHED NICKEL HARDWARE
- FRIDGE W/ ICE MAKER, DW, MICROWAVE & OVEN

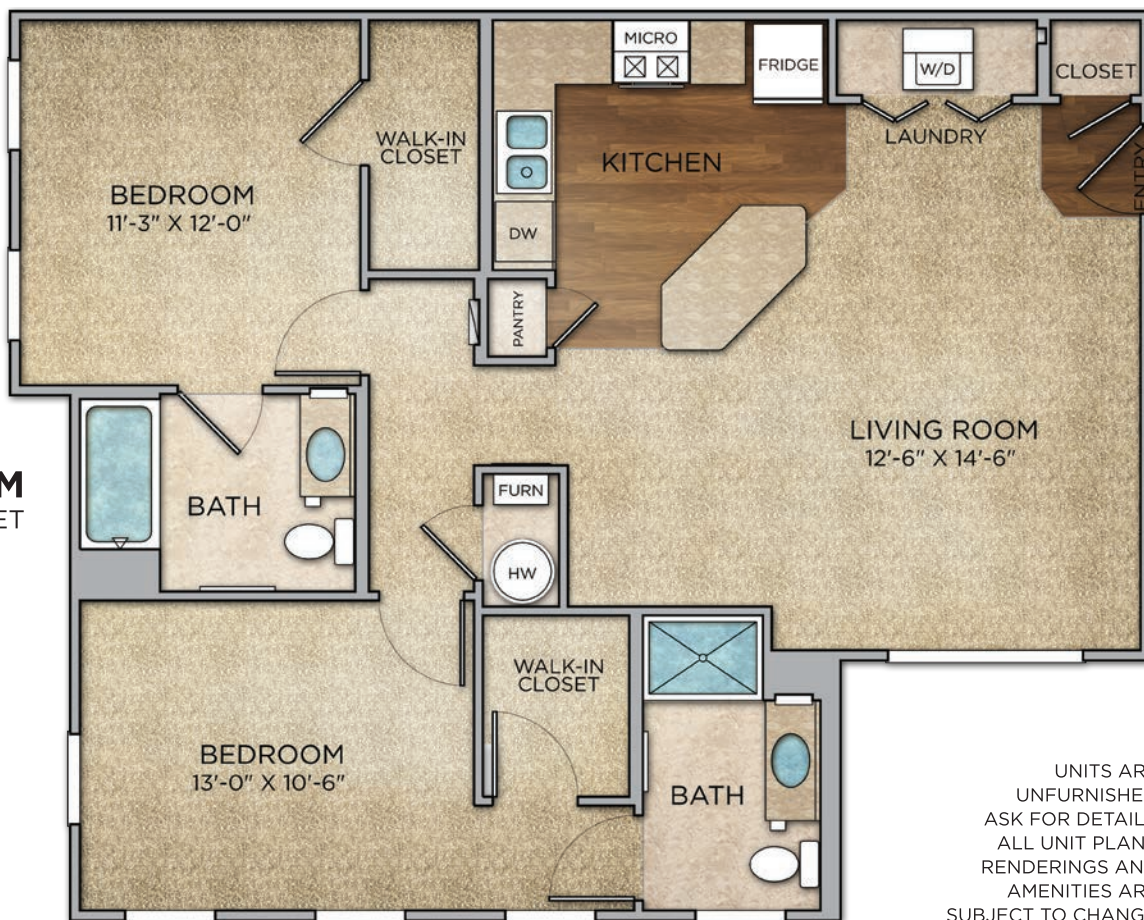


Your community.

- 1 & 2 BEDROOM UNFURNISHED UNITS FOR GRADUATE STUDENTS
- CONFERENCE/STUDY ROOM
- ONSITE MANAGEMENT & MAINTENANCE
- LOCATED ON THE CABS ROUTE
- PET FRIENDLY
- CAFE & TV LOUNGE
- LUSH COURTYARD WITH GRILL & SEATING
- ON-SITE PARKING WITH GARAGES AVAILABLE
- 24 HOUR ON CALL EMERGENCY MAINTENANCE
- RECYCLING FACILITY
- STORAGE UNITS AVAILABLE



2 BEDROOM 1,028 SQUARE FEET



UNITS ARE UNFURNISHED. ASK FOR DETAILS. ALL UNIT PLANS, RENDERINGS AND AMENITIES ARE SUBJECT TO CHANGE.

