

THE STUDENT LIFE MULTICULTURAL CENTER PROUDLY PRESENTS

# WOMEN'S HISTORY MONTH 2022

## APIDA Women's Equal Pay Day

With OPAWL: Building AAPI Feminist Leadership

March 9 from 6 – 7:30 p.m. on Zoom

[go.osu.edu/APIDAEqualPayMarch9](https://go.osu.edu/APIDAEqualPayMarch9)



### SUPARNA BHASKARAN | OSU WGSS

Dr. Bhaskaran is a Lecturer in Women's Gender and Sexuality Studies Department at Ohio State. She is an expert in research and analysis of social justice, inequity, policy and identity politics. She is one of the founding members of OPAWL: Building AAPI Progressive Feminist Leadership.



### REBECCA NELSON | COMMUNITY ADVOCATE

Rebecca Nelson is a community advocate with a history of service within public health, higher education and board/civic engagement work. She has spent her career serving on numerous boards and leadership roles. She is a founding member of OPAWL: Building AAPI Feminist Leadership.



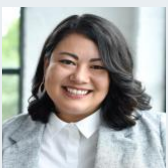
### LALITHA PAMIDIGANTAM | POLICY ANALYST, YWCA COLUMBUS

Lalitha works on legislative and advocacy matters regarding the elimination of racism and the empowerment of women. Her work includes fighting the anti-CRT bills, eradicating police brutality and moving the needle forward on equity for all marginalized groups. She organizes and spends time with OPAWL members on political action and community building.



### BHUMIKA PATEL | DIRECTOR, HUMAN SERVICE CHAMBER

Bhumika is the Director of Membership & Community Engagement for the Human Service Chamber of Franklin County. A first-generation immigrant who was raised in a small, rural town in Georgia, Bhumika has lived in Columbus since 2018. She is a board member and longtime volunteer for OPAWL.



### TANYA SALYERS | COMMUNITY RELATIONS MANAGER, COTA

Tanya is responsible for COTA's outreach and engagement with non-profit partners and community leaders. She was named a 2021 YWCA Columbus Woman on the Rise and has spent her professional career empowering women and advocating for social justice. She is a long-standing member and volunteer with OPAWL: Building AAPI Feminist Leadership.