

The American Foundry Society



The Ohio State University Chapter

2018 - 2019 Officers



Colin Ridgeway (.38)
President



Sarah Ridgeway (.59)
Vice Chair



Troy Lewis (.2250)
Treasurer



Michael Moodispaw (.4)
President in training



Adam Braff (.6)
E-Council Rep



Jack Canaday (.20)
Secretary

Activities

Foundry Meetings

- 50+ Pre made patterns to choose from
- We want YOUR ideas!
- We can make your imagination happen!



Networking - Central Ohio AFS

- 1 Meeting each month (Every 3rd Thursday)
- Chance to meet & network with professionals in the industry
- Build relationships and create opportunities for internships/Co-Ops



AFS News Release

AFS Chapters

OSU, Cen. Ohio chapters have strong partnership

Eric Weiffenbach remembers visiting Ohio State University's working foundry as a boy with his father. Today, Weiffenbach (Keener Sand & Clay Co.) continues that tradition – this time, as president of the AFS Central Ohio Chapter.

Every fall, the Central Ohio Chapter and the OSU Student Chapter come together for a joint dinner and meeting on campus at OSU. It's an opportunity for the students to present their work and network with professionals, and a chance for the pros share their knowledge and recruit students into the industry.

"We tour their foundry and they give us a briefing of what they're studying and their upcoming projects," Weiffenbach said. The students do some work for the professional chapter, he added. "They're



OSU Student Chapter Chair Colin Ridgeway talks during a joint meeting with the Central Ohio Chapter Oct. 18.

in the process of making our speaker awards."

The Central Ohio Chapter also announces its yearly scholarship for metal-

casting students during the meeting, the most recent of which took place Oct. 18.

"It's a really symbiotic relationship," said Colin Ridgeway, an OSU graduate student who chairs the student chapter and who is on the board of the Central Ohio Chapter. "They really have our back."

The chapters' connection extends beyond their annual get-together at the university. OSU Student Chapter members are welcome at Central Ohio Chapter meetings, usually with the help of a local company picking up their fees to attend.

Ridgeway said he's grateful for OSU's partnership with members of the Central Ohio Chapter.

"A lot of them have had full careers in the foundry industry, and they want to give back," he said.

- AFS recently recognized the partnership between COC AFS and OSU Foundry Club
- OSU extremely thankful for this partnership and wants to thank them for their involvement over the last 4 years.

Professional Development/ Plant Tours

Local professionals join us and share different casting techniques

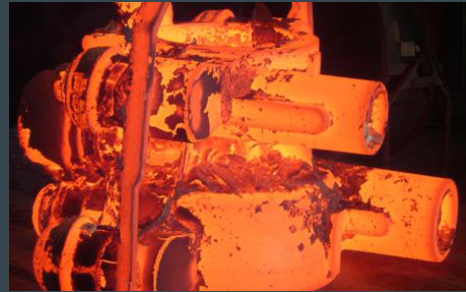
Great way to network!



Previous plant Tours

Tinker Omega (Springfield, OH)

Fisher Cast Steel (West Jeff, OH)



CIC Conference in Chicago

Annual Meeting in Chicago

- Foundry Specific Career Fair
- 1-on-1 meetings with potential employers
- All-expenses paid trip to Chicago
- Wined and dined by industry

2018 Trip:

- 5 internship offers
- Colin won the Loper Award

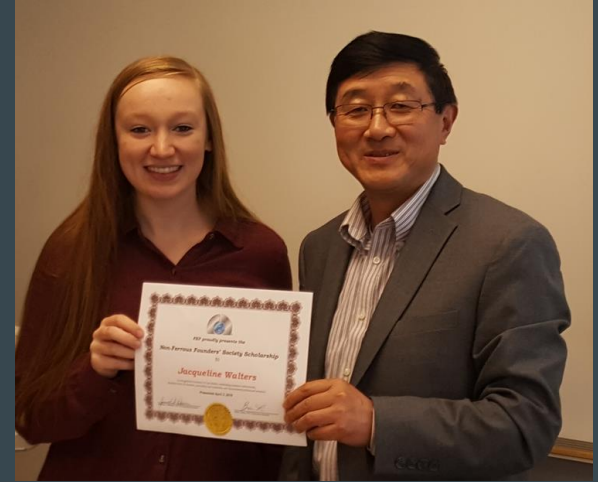


Scholarships

Last year (2018-2019) received \$14,500 in scholarships

- Annual Scholarship through FEF (~\$4,000)
- Central Ohio AFS (~\$4,500)
- General FEF Scholarships
- CIC conference

<http://u.osu.edu/afsatosu/scholarships/2018-winners/>



Previous Projects

Comic Con Table Decorations



BAJA Buckeyes Gearbox



The New AFS Speaker Award!



The New AFS Speaker Award!



The New AFS Speaker Award!



Future Projects

Central Ohio AFS Speaker Award:

→ Need to cast 10+ for Central Ohio AFS Chapter

Your Ideas:

→ Any project you might have we can do it!

Next Steps

Fill out the Doodle form for availability this upcoming semester.

Watch for e-mails from officers about upcoming events!

Sign up to volunteer at the Hot Chocolate 5k/15k!

Your Ideas:

→ Any project you might have we can do it!

Follow us on:



Twitter

afs_osu



Instagram

afs.osu



Facebook

Afs Osu

Visit the website for updates!

<http://u.osu.edu/afsatosu>